

Clinics have already seen unrivalled results, will your favourite be next?



Before

After

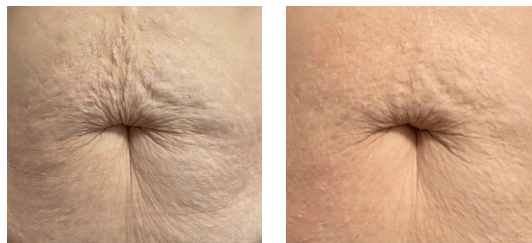
Courtesy of Medicare Cosmetics



Before

After

Courtesy of Clinic 10



Before

After

Courtesy of Clinic 10

FOCUS_{DUAL}

Lift ————
Firm ————
Tighten ————

FOCUS_{DUAL}

To find out more about this innovation, and to check Lynton's clinic finder, visit our website today!



lynton.co.uk

lynton.co.uk



FOCUS_{DUAL}

Give Skin Back Its SNAP!

The Focus Dual® was created to address the growing need for powerful, effective skin rejuvenation treatments capable of delivering outstanding results with minimal downtime.

The Focus Dual® exclusively combines two gold-standard technologies to lift, firm and tighten the skin - RF Microneedling and High Intensity Focused Ultrasound (HIFU).

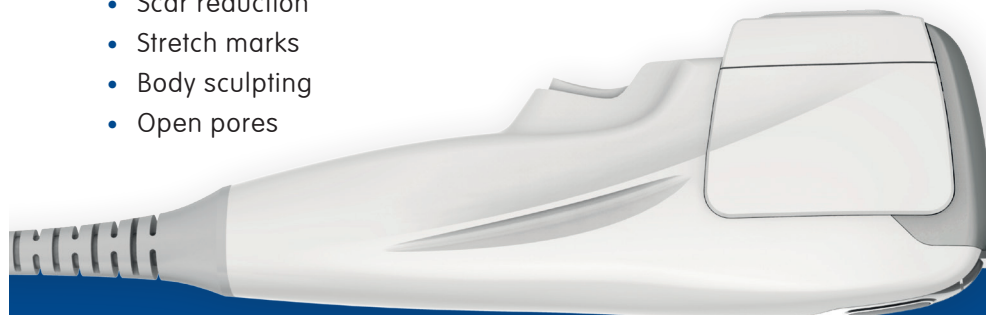
Although each of these options is powerful when used separately, they produce truly amazing results when combined, offering outstanding skin reinvigoration and rejuvenation results.

Treatments include:

- Skin lift, firm and tightening - face and body
- Wrinkle reduction
- Scar reduction
- Stretch marks
- Body sculpting
- Open pores

- Targeting all layers of the skin
- Immediate tightening and lifting
- Virtually no downtime
- Suitable for all skin types

Lift | Firm | Tighten



lynton.co.uk

